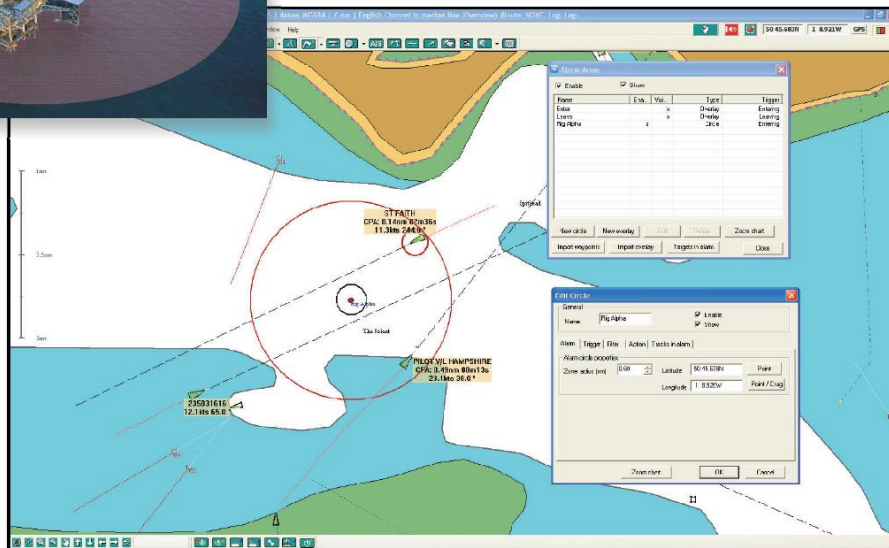


PLATFORM PROTECTION SYSTEM

THE ULTIMATE RIG PROTECTION SYSTEM



Platform Protection System, provides a powerful yet easy to use system to give alarms from tracked vessels.



Key Benefits

Improved safety

- 'At a glance' situation awareness
- Overlay of AIS targets on charts
- Customisable alarm zones
- Electronic chart display
- Weather overlays
- Own position input

Increased operational efficiency

- Easy to use system interface
- Once set up runs unattended
- AIS filter lists for vessels
- Quick alarm zone input
- Automatic logging of incoming data
- Automatic data logging of AIS and RADAR targets

Easy set up of alarm zones

The easy to use alarm set up feature allows alarms zones to be created as circles or polygons. Conditions under which the alarms will sound (including filter lists) are also customizable, allowing for targets entering, leaving or crossing an alarm zone.

AIS vessel filtering

Each alarm zone can have a filter list set up for it so the alarm is either triggered by those in the filter list or those not in the filter list. This prevents alarms being falsely triggered by authorised vessels.

Quick view of alarm parameters

The alarm zone tool allows the user to quickly check the alarm zone parameters. The user can also switch alarm zones on and off if required.

Logging and playback of AIS and ARPA targets

Incoming data is recorded for information or viewing at a later date. Log files can be replayed with on screen animation.

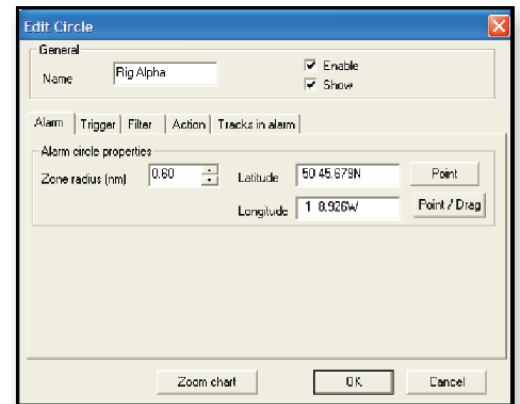
Automated running

Once set up the system runs unattended

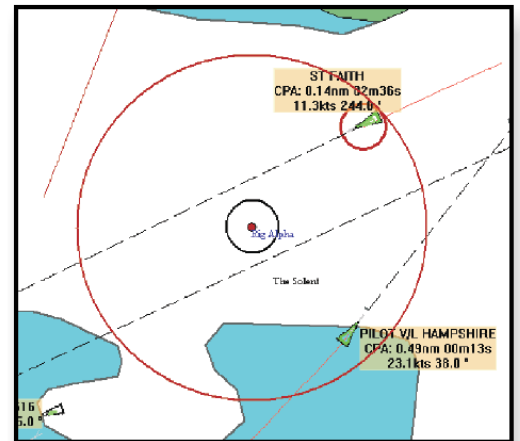
allowing the crew to focus on other tasks knowing that the system is watching out for them.

Overlaid on charts

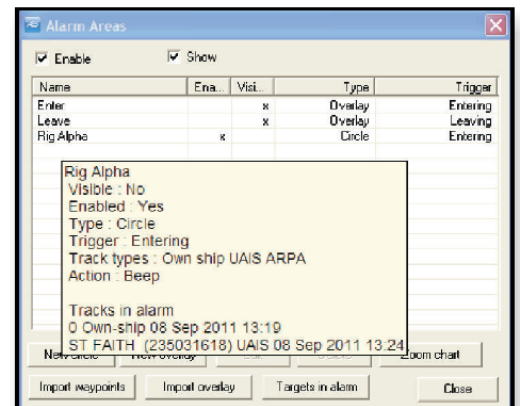
Nautical charts can be loaded into the system to allow the targets and location of the rig to be shown geographically.



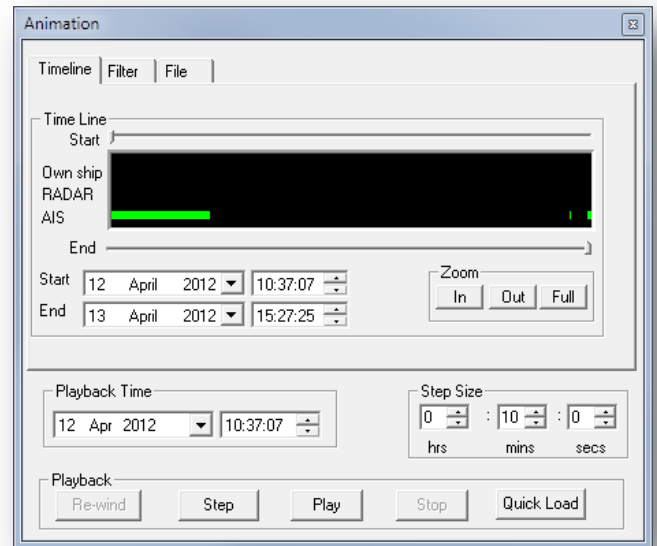
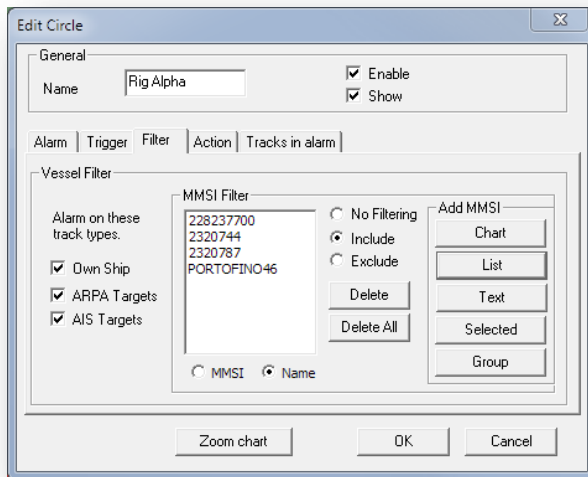
Simple alarm zone set up



Filtered vessel does not set off the alarm

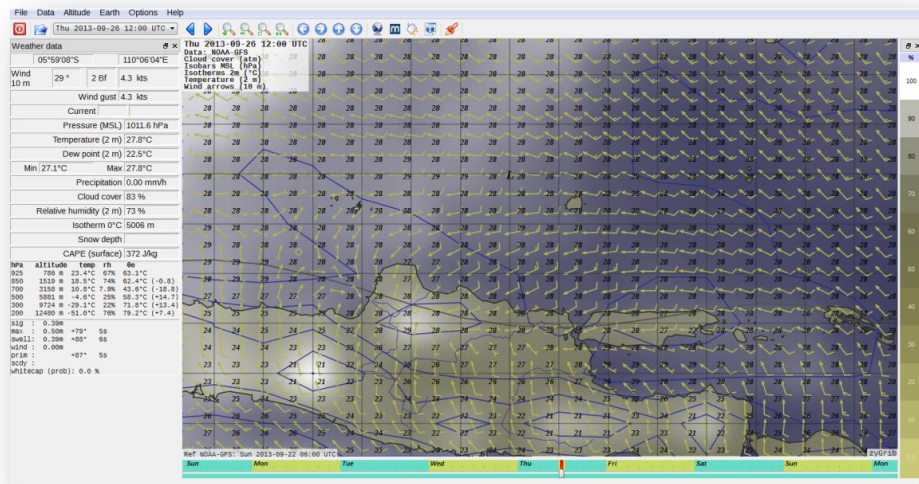


Quick view of alarm set up and parameters



Weather System Features :

- Pressure at mean sea level
- Wind 10 m above surface
- Wind gust
- Temperature 2 m above surface
- Temperature min and max 2 m above surface
- Relative Humidity 2 m above surface
- Total precipitation (mm/h)
- Total Cloud Cover (%)
- Dew Point 2 m above surface
- 0°C Isotherm altitude
- Snow (Depth - Risk)
- CAPE (convective available potential energy) and CIN (convective inhibition)
- Data in altitude (925, 850, 700, 500, 300, 200 hPa) : geopotential altitude, wind, temperature, theta-e, relative humidity
- Display of atmospheric sounding forecast on thermodynamic diagrams SkewT-LogP.
- Waves : height, direction, period, whitecap probability, for wind waves, swell, and for significant, maximum, primary, secondary waves.
- Sea current



HARDWARE SPECIFICATION

- **Processors:**
 - Supporting Intel® 4th Generation Core™ i7, i5 Processors / Supports Intel® 22nm CPUs
 - Optional support for Intel Xeon processors
 - Optional support for AMD Processors including Opteron
- **Memory:**
 - Dual-Channel memory architecture
 - 4 DDR3 Memory Sockets Supporting up to 32GB of RAM / Memory
 - Additional customized solutions which include Triple-Channel or higher memory configurations
- **Hard Drive:**
 - Supports all SATA (Serial-ATA) I, II & III Hard Drives (1.5Gb/s, 3Gb/s and 6Gb/s)
 - Optional support for SAS (Serial Attached SCSI), [SCSI](#) or [Solid State Hard Drives](#) (SSD)
 - Onboard RAID configurations (0, 1, 5, 10), requires multiple drives, Optional Intel Smart Response Technology on supported Processors
- **Drive Bays:**
 - (2) 3.5" Removable Drive Bays (left side, covered with removable cover)
 - (2) 3.5" Removable Drive Bays (right side, covered with removable cover)
 - (2) 3.5" Drive Bays, fixed for Internal Hard drive, floppy drive, DAT, ZIP, or other drives
 - (2) 5.25" Drive bay for optical drives, or other devices (Left and Right side)
- **Removable Storage:**
 - DVD-RW/CD-RW Optical Drive offered standard (uses 1 x 5.25" Bay)
 - Optional support for all Standard 5.25" Optical Disk Drives
 - Optional DVD-RW/Blu-Ray Burner
 - Optional Removable drive bay with Key locking (uses 5.25" expansion bay)
- **Display:**
 - 20.1" TFT Display, 250 nits
 - 1600 x 1200 Native Resolution
 - 700:1 Contrast Ratio
 - View Angles, 85/85/85/85 (U/D/L/R degrees)
 - DVI or VGA controller board to interface to Video
- **Video Adapter:**
 - Onboard integrated video, max. shared memory of 1GB, supports up to 3 displays simultaneously
 - Includes DVI-D (Digital Only), VGA / HD-15 and HDMI ports
 - DVI-D max. resolution 1920 x 1200 @ 60 Hz
 - VGA / HD15 max. resolution 1920 x 1200 @ 60 Hz
 - HDMI max. resolution 4096 x 2160 @ 60 Hz
 - Optional PCI or PCIe Graphics Adapter, Multiple monitor support, Quad or higher Video Options available
- **Networking**
 - Onboard 10/100/1000Base-T Gigabit LAN, RJ-45
 - Optional support for Fiber, 10GB, Wireless and more
- **Sound**
 - Onboard 8-Channel High Definition Audio CODEC
 - Built-in amplified Stereo Speakers
- **Ports:**
 - (1) Optional onboard DB9 Serial / RS232
 - (4) - [USB](#) 2.0 / 1.1 Ports (rear-mount)
 - (2) - [USB](#) 3.0 / 2.0 Ports (rear-mounted)
 - (2) - [USB](#) 2.0 / 1.1 ports (front-mount)
 - (1) RJ45 10/100/1000 BASE-T Gigabit LAN Port



- (3) Audio Jacks (Input, Output and MIC)
- (2) PS/2 ports for Keyboard & Mouse
- (1) VGA / HD-15 Video
- (1) DVI-D (Digital Only)
- (1) HDMI

- **Power Supply:**

- Internal 100~240 VAC @ 50 ~ 60 Hz, 650W ATX Standard
- Optional DC input available (*Call Factory for your requirement*)

- **Expansion Slots:**

- Standard offering includes (1) PCIe 2.0 / 3.0 x16 (operates at x16), (1) PCIe 2.0 x16 (operates at x4 max), (2) PCIe 2.0 x1 and (3) PCI

- **Keyboard:**

- Detachable Keyboard with built-in two button Touchpad Pointing Device

- **Enclosure:**

- Rugged Heavy Duty Aluminum Alloy Chassis with Rubber Corner Bumpers

- **Cooling Fans:**

- (2) 100mm Fans

- **Operating Temperature/Humidity:**

- 0 to 45C (32~113F)
- 20~90% @ 40C, non-condensing

- **Storage Temperature/Humidity:**

- 20 to 60 C (-4F~176F)
- 10~95% @ 40C, non-condensing

- **Dimensions:**

- 20.0" W x 15.25" H x 9.25" D
- 508mm W x 387.35mm H x 244.95mm D

- **Weight:**

- Approx. 65 lbs. depending on configuration

- **Warranty:**

- 1 Year limited warranty

**Operating System:**

- Windows 7 (32-Bit / 64-Bit), Windows 8 (32-Bit / 64-Bit)
- Windows Vista (32-Bit / 64-Bit), Windows Server 2003, Windows Server 2008, Ubuntu Linux and more
- Contact us for your specific operating system requirement to discuss compatibility

PT INFRA RCS INDONESIA

Product and information : info@infra-rcs.co.id

Human resource : hrd@infra-rcs.co.id

Sales and trading : sales@infra-rcs.co.id

Technical support : support@infra-rcs.co.id

Jakarta

Plaza Aminta Lt. 7 suite 706
Jl. TB Simatupang Kav. 10
Jakarta 12012
Ph : 021 - 751 10 19
Fax : 021- 751 14 01

Bandung

Ruko Istana Pasteur Regency No
CRB 72
Sukaraja, Cicendo
Bandung 40162
Ph/Fax : 022 - 860 653 63