



INFRA RCS
INDONESIA



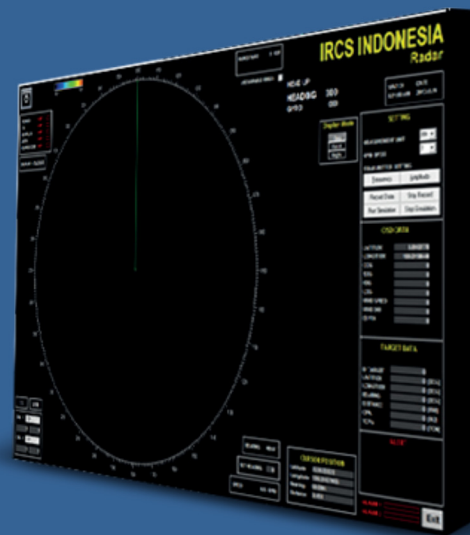
INFRA COASTAL RADAR

FM-CW S-BAND

The INFRA COASTAL RADAR describes a type of portable, land based radar. The advantages of INFRA COASTAL RADAR are low maintenance cost, low power consumption, compact system, large observation area and Low Probability of Intercept (LPI).

Antenna:

Microstrip Patch Array With Gain ~ 30 dB
Dual Antenna Configuration for Transmit and Receive
Elevation Range: -5 degree up to 10 degree
Vertical Beam Width: ~ 10 degree



Transmitter:

Frequency: S-Band
Range: Up to 40 nm
Output Power: Max 10 Watt

Receiver:

IF Bandwidth: 512 KHz
PC-Based Processing System
Standard PC Display

Frequency Generation:

Main Frequency Generator DRO
(Dielectric Resonant Oscillator)
FM-Modulation

Software: IMO Standard + ARPA + ECDIS

Features of S-Band Radar:

Low Transmit Power
Low Probability of Intercept (LPI) Radar
Doppler Capability
Able to be Integrated Into a Radar System